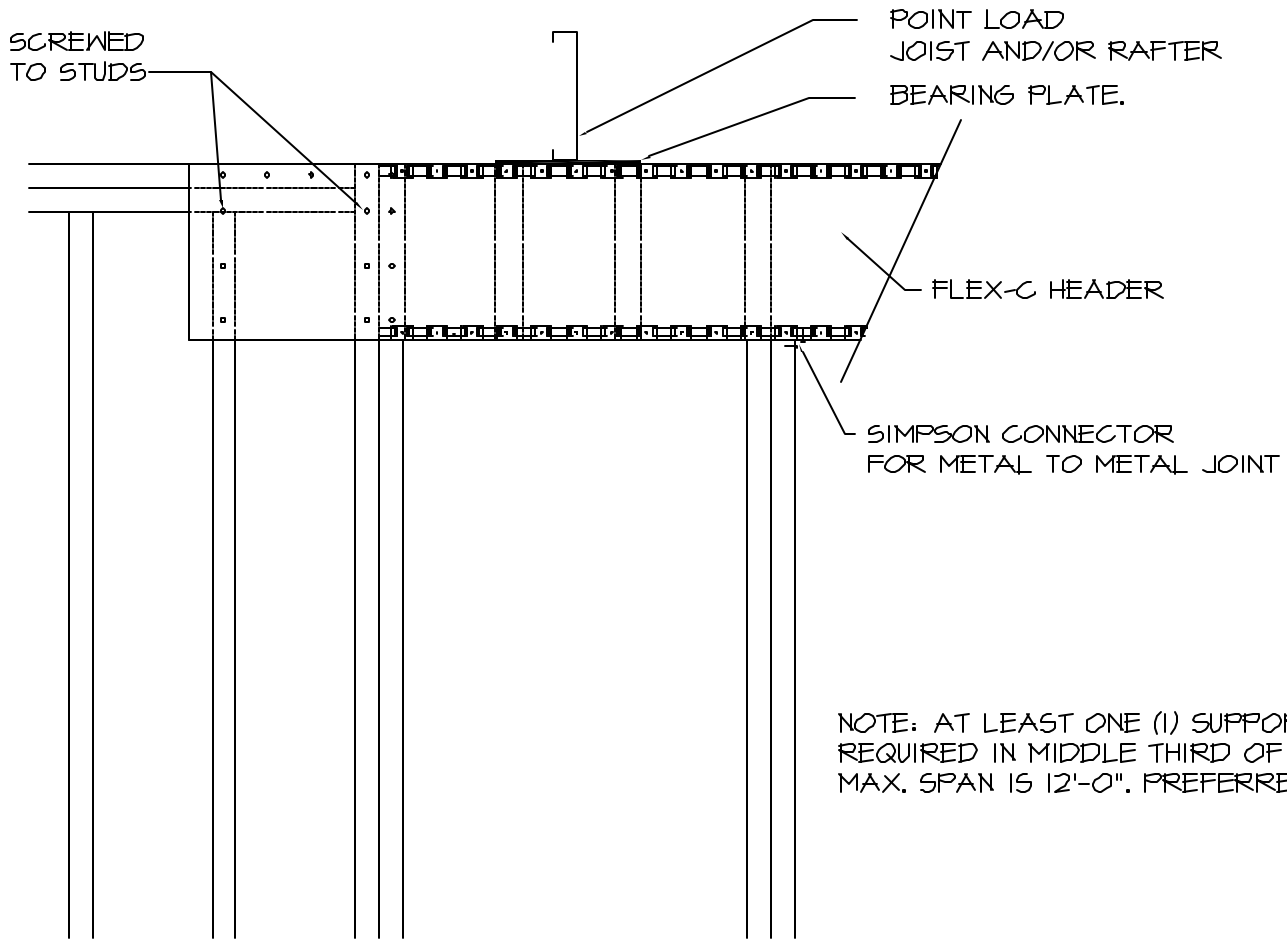


APPLICATION DETAIL

FLEX-ABILITY CONCEPTS' PRODUCT SHOWN:
FLEX-C HEADER



NOTE: AT LEAST ONE (1) SUPPORT
REQUIRED IN MIDDLE THIRD OF SPAN.
MAX. SPAN IS 12'-0". PREFERRED DESIGN

 **FLEX-C HEADER ELEVATION 3**
NTS

DISTRIBUTOR:	QUANTITY:
CONTRACTOR:	APPROVED BY:
PROJECT:	ARCHITECT:
PROJECT DETAIL: ADMISB	DATE:

5500 SW 36TH STREET
OKLAHOMA CITY, OK 73179
TEL: 405-996-5343 FAX: 405-996-5353
EMAIL: info@flexabilityconcepts.com
WEB: www.flexabilityconcepts.com